

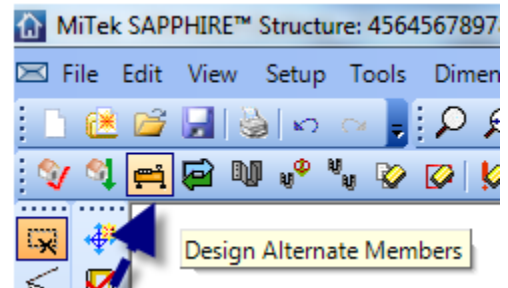
Forte™ software by Weyerhaeuser now imports member information from MiTek Sapphire™ Structure software.

## Supporting Our Customers

To support our customers' needs for flexible software solutions while continuing to specify our Trus Joist® products, we now offer the ability to export Trus Joist member information from Sapphire Structure software that can be imported into Forte software for design solutions.

## Creating the Export File

To access the export functionality in Sapphire Structure, customers will need to have version 7.2.5.8 or newer and the proper software licensing activated. There are two separate licenses that must be activated; a license for access to Trus Joist (iLevel) Products which allows users to place structural members using Trus Joist material and a separate license for access to the Design Alternate Members tool that provides the ability to export the members to an xml file that can be imported using Forte software. Once activated, the Design Alternate Members tool will be available from the Design toolbar:



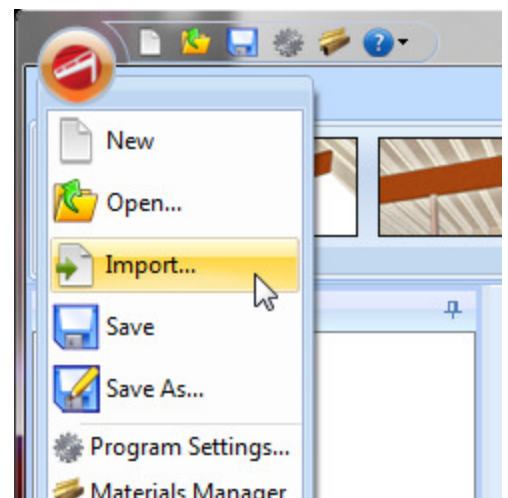
For more information or assistance with activating and using the material and export functionality please contact the MiTek Technical Support group at 1.866.648.3587 or [miteksupport@mii.com](mailto:miteksupport@mii.com).

## Opening the File in Forte

Using Forte v3.0 or newer, expand the Forte button and select 'Import':

Locate the Sapphire Structure export file in the Import Extracted File dialog and select 'Open'. Forte will import the member information from the file and display an Import Results dialog when the import is complete. The Results dialog will report the success or failure of import for each member included in the file along with a short description of the outcome. Once the Results dialog has been closed Forte will display with the successful member information for editing and design of a final solution. Forte currently provides import of the following members:

- Floor Joists
- Floor Beams
- Wall Headers



For more information or assistance with the import functionality in Forte software please contact Weyerhaeuser Software Support at 1.800.833.9491 or [software@weyerhaeuser.com](mailto:software@weyerhaeuser.com)

## Additional Notes

For additional technical information about the Forte Import please see the 'Forte Importer in v3.0.pdf' document. Additionally, a similar offering for export of member information will be available in Javelin software v4.4 1<sup>st</sup> Quarter 2012.